

# Getac

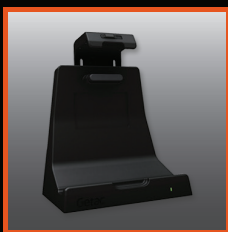
Rugged Mobile Computing Solutions

# F110

## Fully Rugged Tablet



- Enhanced Enterprise Security with optional Intel vPro, Windows Disk Encryption, TPM 2.0 and many more multi-factor authentication options
- 6th Generation Intel® Core™ i7/i5 vPro™ Processor
- 11.6" LumiBond® 2.0 Display with Getac Sunlight Readable Technology and Capacitive Touchscreen
- 5 Customizable Configurations to Fit Your Need (Optional 1D/2D Imager Barcode Reader/Serial Port/Ethernet/MicroSD/2nd USB 2.0 Port)
- LifeSupport™ Battery Swappable Technology



Office Dock





## Specifications

<b>Model Name</b>	F110 G3	<b>Communication Interface</b>	Optional 10/100/1000 base-T Ethernet <sup>i</sup> (occupies expansion slot) Intel® Dual Band Wireless-AC 8260, 802.11ac Bluetooth (v4.2) <sup>ii</sup> Optional dedicated GPS Optional Gobi™ mobile broadband
<b>Operating System</b>	Windows 10 Professional Windows 7 Professional	<b>Software</b>	Getac Utility (including Power Manager) Getac Camera Getac Geolocation Getac Barcode Manager Adobe® Reader®
<b>Mobile Computing Platform</b>	Intel® Core™ i7 Technology Intel® Core™ i7-6500U Processor 2.5GHz Max. 3.1GHz with Intel® Turbo Boost Technology - 4MB Intel® Smart Cache  Intel® Core™ i7 vPro™ Technology Option Intel® Core™ i7-6600U vPro™ Processor 2.6GHz Max. 3.4GHz with Intel® Turbo Boost Technology - 4MB Intel® Smart Cache  Intel® Core™ i5 Technology Intel® Core™ i5-6200U Processor 2.3GHz Max. 2.8GHz with Intel® Turbo Boost Technology - 3MB Intel® Smart Cache  Intel® Core™ i5 vPro™ Technology Optional Intel® Core™ i5-6300U vPro™ Processor 2.4GHz Max. 3.0GHz with Intel® Turbo Boost Technology - 3MB Intel® Smart Cache	<b>Security Feature</b>	Intel® vPro™ Technology TPM 2.0 Optional RFID <sup>iii</sup> , iv Magnetic Stripe reader, Smart Card reader or fingerprint scanner, <sup>v</sup> Kensington lock
<b>VGA Controller</b>	Intel® HD Graphics 520	<b>Power</b>	AC adapter (65W, 100-240VAC, 50 / 60Hz) Li-Ion smart battery (11.4V, 2160mAh) x 2 (up to 12 hours of battery life) <sup>vi</sup> LifeSupport™ battery swappable technology
<b>Display</b>	11.6" TFT LCD HD (1366 x 768) 800 nits LumiBond® display with Getac sunlight readable technology Capacitive multi-touch screen	<b>Dimension (W x D x H) &amp; Weight</b>	314 x 207 x 24.5 mm (12.4" x 8.15" x 0.96"), 1.39 kg (3.08 lbs) <sup>vii</sup>
<b>Storage &amp; Memory</b>	4GB DDR4 expandable to 16GB SSD 128GB / 256GB / 512GB	<b>Rugged Feature</b>	MIL-STD-810G certified and IP65 certified MIL-STD-461F certified <sup>viii</sup> Optional ANSI/ISA 12.12.01 Vibration & drop resistant e-Mark certified for vehicle usage
<b>Keyboard</b>	6 tablet buttons (Windows, Power, Function Key, Camera Capture/ Barcode Reader Trigger, Volume Up, Volume Down)	<b>Environmental Specification</b>	Temperature <sup>ix</sup> : - Operating: -21°C to 60°C / -5.8°F to 140°F - Storage: -40°C to 71°C / -40°F to 160°F Humidity: - 95% RH , non-condensing
<b>Pointing Device</b>	Touchscreen - Capacitive multi-touch screen - Optional dual mode touchscreen (multi-touch and digitizer)	<b>Optional Accessories</b>	Carry bag Battery charger Multi-bay charger (Dual Bay) Multi-bay charger (Eight Bay) Detachable folding keyboard Vehicle adapter (90W, 11-16VDC and 22-32VDC) MIL-STD-461F certified AC adapter (90W, 100-240VAC) Digitizer pen Capacitive stylus (Hard-tip) Protection film Tablet folio case Hand-strap Shoulder harness (4-point; handsfree) Shoulder strap (2-point) Battery (11.4V, 2160mAh) AC adapter (65W, 100-240VAC) Vehicle cradle Vehicle dock Office dock Office dock with twin battery charger
<b>Expansion Slot</b>	Optional 1D/2D Imager Barcode Reader, Serial Port, Ethernet, MicroSD or 2 <sup>nd</sup> USB 2.0 Port <sup>i</sup>		
<b>I/O Interface</b>	FHD webcam x 1 8M pixels auto focus rear camera x 1 Headphone out / mic-in combo x 1 DC in Jack x 1 USB 3.0 (9-pin) x 1 Docking connector (24-pin) x 1 HDMI x 1 Optional RF antenna pass-through for GPS, WLAN and WWAN		

### Docking Solutions

	Serial Port	External VGA	Microphone	Audio Output	DC in Jack	USB	LAN	HDMI	RF Antenna Connector (GPS, WWAN, WLAN)
Vehicle Dock	2	1	1	1	1	4	1	1	3
Office Dock	2	1	1	1	1	4	1	1	--

i Barcode reader, Serial port, Ethernet, MicroSD or 2<sup>nd</sup> USB 2.0 port are mutually exclusive options.  
ii Bluetooth performance and connectable distance may be subject to interference with the environments and performance on client devices, users may be able to reduce effects of interference by minimizing the number of active Bluetooth wireless devices that is operating in the area.  
iii RFID, Magnetic Stripe reader, Smart card reader are mutually exclusive options.  
iv 13.56MHz Contactless RFID/NFC reader (ISO 15693, 14443 A/B, Mifare and FeliCa™ compliant).  
v Windows 7 and Windows 10 only.  
vi Battery life testing conducted under MobileMark 2007. Battery performance will vary upon software applications, wireless settings, power management settings, LCD brightness, customized modules and environmental conditions. The battery has a limited number of charge cycles and may eventually need to be replaced by a Getac service provider. Battery life and charge cycles vary by use and settings.  
vii Weight varies from configurations and optional accessories.  
viii MIL-STD-461F 90W AC adapter sold separately.  
ix Tested by a national independent third party test lab following MIL-STD-810G.



### Getac Technology Corporation

5F, Building A, No. 209, Section 1, Nangang Rd., Nangang Dist.,  
Taipei City, 11568, Taiwan, R.O.C.  
Tel: +886 2 2785 7888  
globalmarketing@getac.com  
www.getac.com

